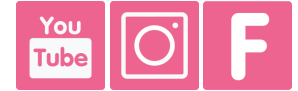
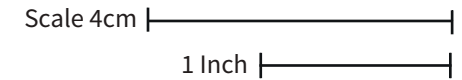


ShannieMakes: BUTTERFLY MASK, EXTRA LARGE

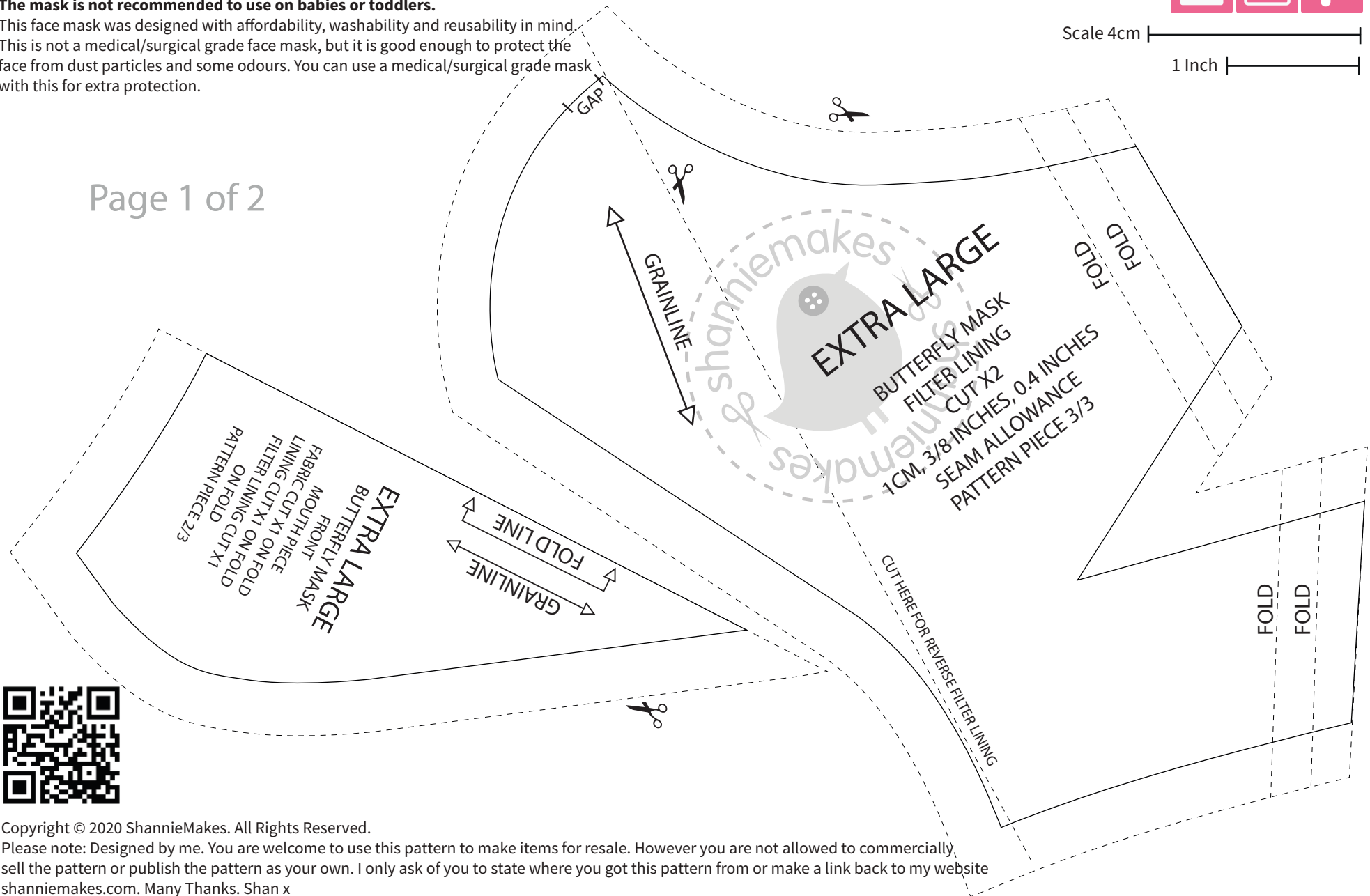


The mask is not recommended to use on babies or toddlers.

This face mask was designed with affordability, washability and reusability in mind. This is not a medical/surgical grade face mask, but it is good enough to protect the face from dust particles and some odours. You can use a medical/surgical grade mask with this for extra protection.

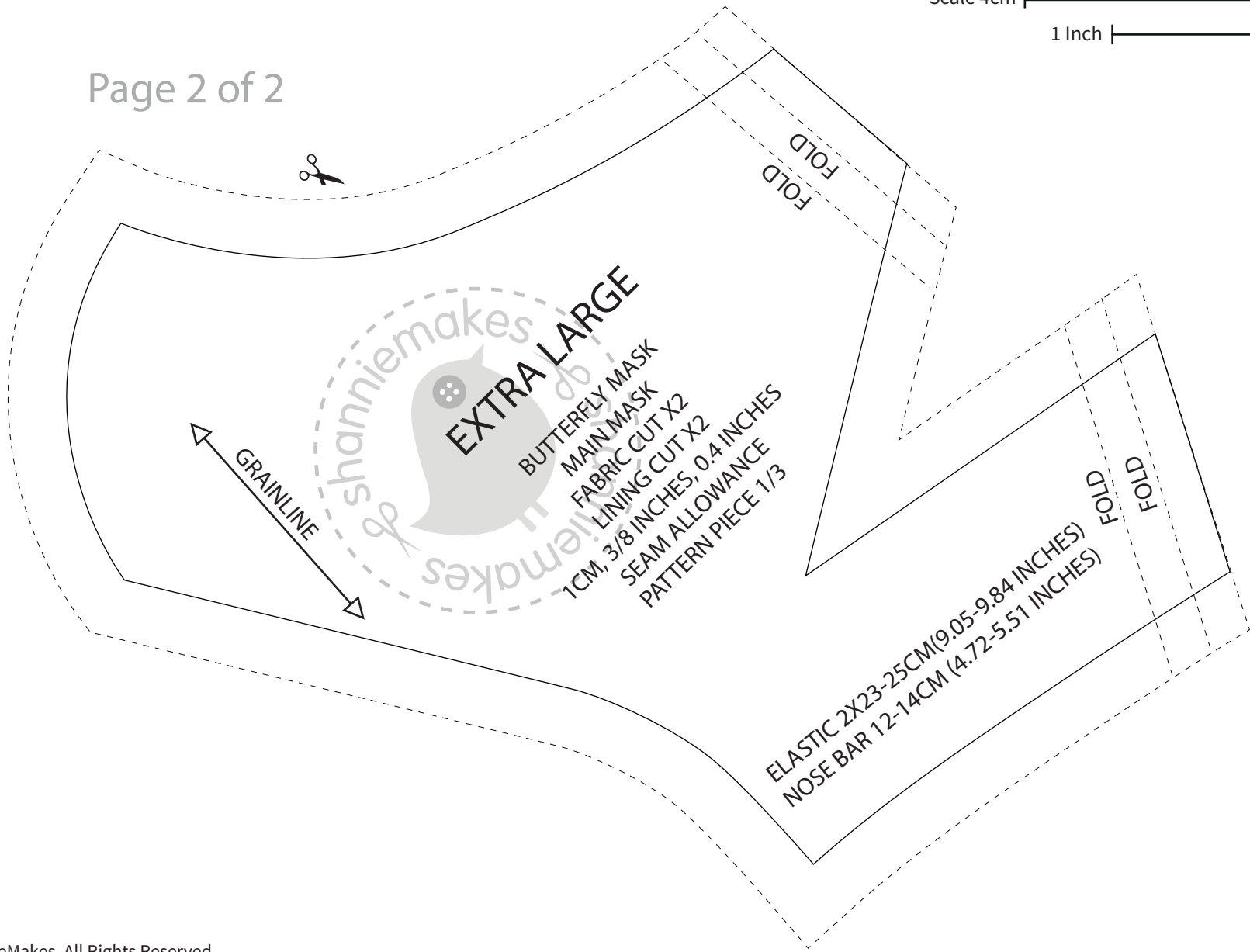
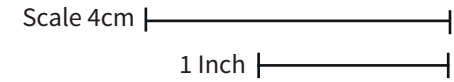


Page 1 of 2



Copyright © 2020 ShannieMakes. All Rights Reserved.

Please note: Designed by me. You are welcome to use this pattern to make items for resale. However you are not allowed to commercially sell the pattern or publish the pattern as your own. I only ask of you to state where you got this pattern from or make a link back to my website shanniemakes.com. Many Thanks. Shan x



Copyright © 2020 ShannieMakes. All Rights Reserved.

Please note: Designed by me. You are welcome to use this pattern to make items for resale. However you are not allowed to commercially sell the pattern or publish the pattern as your own. I only ask of you to state where you got this pattern from or make a link back to my website shanniemakes.com. Many Thanks. Shan x